

Your  
**Guide**  
To

The GoQuick logo features a blue swoosh that starts as a yellow-to-blue gradient and ends in a blue circle. Below the swoosh, the word 'GoQuick' is written in a bold, blue, sans-serif font with a registered trademark symbol.

**GoQuick<sup>®</sup>**

Somatropin for Injection



## Instructions for use<sup>1</sup>

Your doctor has prescribed you Go Quick (Samotropin for injection), you are getting this guide to familiarize with the Go Quick device. As with any device, the more the GoQuick is used, the more familiar it will become. Overtime, using it will become just another part of the everyday routine. Even so, there may still be times when a reminder is required, even after being trained on how to use the GoQuick.

This guide can be used as a reminder on how to set up and use the pen.

### Before you start

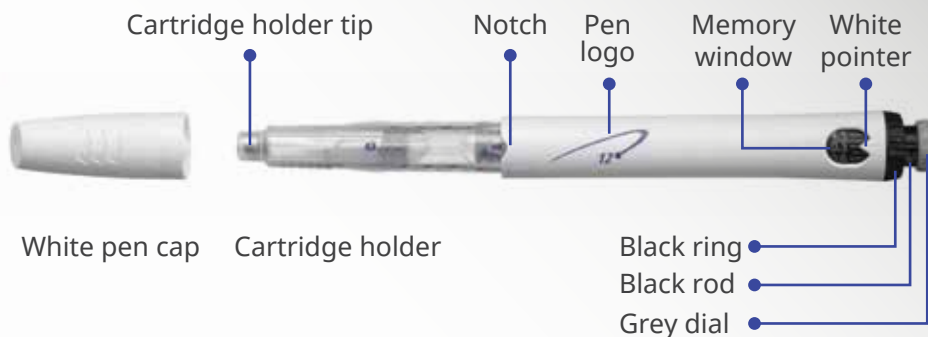
Get the information about the product from your doctor and read the instruction on how to use it.

Following are the instruction on how to use the product:

Make sure you have the followings items laid out in front of you:

- \* GoQuick **5.3 mg pen**, or GoQuick **12 mg pen**
- \* Alcohol swab

# Getting to know the GoQuick<sup>1</sup>



## Needle (not included)

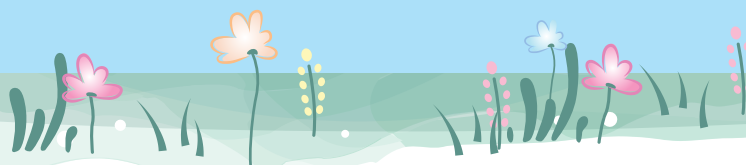


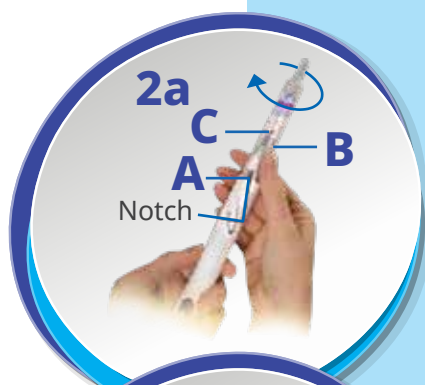
# Initial set up of the GoQuick<sup>1</sup>

The set up procedure **ONLY NEEDS TO BE DONE ONCE WITH EACH NEW PEN**, after which the 3 daily steps are all that's required

## Step 1. Attach the needle

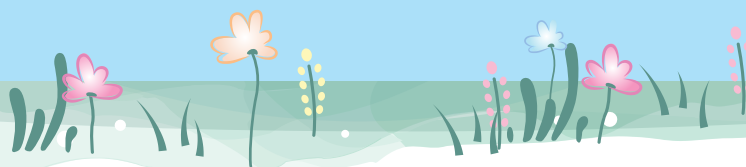
- \* Pull the white pen cap straight off the pen
- \* Peel the seal from a new needle
- \* Firmly grasp the cartridge holder (Figure 1)
- \* Push the needle onto the cartridge holder tip
- \* Gently screw the needle onto the pen. Do not overtighten
- \* Leave both needle covers on the needle





## • Step 2. Mix the Genotropin GoQuick

- \* Hold the pen with the needle end pointing up and the A facing you (Figure 2a)
- \* Firmly twist the cartridge holder into the pen. Continue until clicks into the notch.
  - Gently tilt the pen from side to side. Do not shake the pen. Shaking may damage the growth hormone (Figure 2b)
- \* Check that the liquid in the cartridge is clear. All the powder should be dissolved.
  - If not, gently tilt the pen from side to side a few more times
- \* Check the liquid again. Make sure that it is clear.
  - If the liquid is clear, go to step 3.
  - If the liquid is still cloudy or you see any powder, use a new pen



**3a**

Inner  
needle  
cover



**3b**

**c**



### Step 3. Remove the air

- \* Pull the outer needle cover off. Save it to remove the needle (Figure 3a)
- \* Leave the inner needle cover on
- \* Hold the pen with the needle end pointing up (Figure 3b)
- \* Tap the cartridge holder gently to help any trapped air move to the top
- \* Firmly twist the cartridge holder into the pen until C clicks into the notch (Figure 3b).
  - Some liquid may appear around the inner needle cover

**4a**



**4b**



#### **Step 4. Prime the pen**

- \* Pull the inner needle cover off. Throw it away
- \* Check that 0.1 mg is set in the memory window.
- \* Turn the GREY dial in the direction of the arrows until it stops clicking(Figure 4a)
- \* Hold the pen with the needle pointing up. (Figure 5c with and without needle guard)
- \* Push the injection button until liquid appears
- \* If liquid does not appear, repeat the steps in this section up to 2 more times
- \* If liquid still does not appear, do not use the pen.
  - For more information, see your Patient Information Leaflet



### Step 5. Set the dose

- \* Use the BLACK ring to set the dose. Be careful not to turn the greydial while setting the dose
  - Hold the BLACK ring as shown in Figure 5
  - Turn the BLACK ring until your dose lines up with the white pointer. Your doctor has told you your dose
  - If you turn your dose past the WHITE pointer, just turn the BLACK ring back to set the correct dose
  - If you turn your dose past the WHITE pointer, just turn the BLACK ring back to set the correct dose
  - Once you have set your dose, do not change it unless your doctor or nurse tells you.



#### NOTE:

If you cannot turn the BLACK ring, press in the injection button until it stops clicking. Then continue to set your dose using the BLACK ring. For more information, see your Patient Information Leaflet







### Step 6. Draw up a dose

- \* Turn the GREY dial in the direction of the arrow until the clicking stops(Figure 6a)
- \* Your dose on the BLACK rod should line up with the WHITE pointer
- \* Check that the dose you dialled on the BLACK rod is the same as the dose you set in the memory window (Figure 6b shows an example)
- \* If the doses do not match, make sure you have turned the GREY dial in the direction of the arrows until it does not click anymore



7i



7ii



### Step 7. Give the injection

- \* Prepare an injection site as directed by your doctor.
- \* Hold the pen over the injection site
- \* Push the pen down to insert the needle into the skin
- \* Using your thumb, push the injection button down until it stops clicking (Figure 7i)
  - Count for 5 seconds before you pull the needle out of the skin. Keep light pressure on the button with your thumb while you count (Figure 7ii)
- \* Pull the pen straight out from the skin

#### NOTE:

Do not be afraid of the injection, the needle is as thin as a hair and shouldn't hurt

### Step 8. Remove the needle; cap and store your pen

- \* Do not touch the needle
- \* Carefully cap the needle with the outer needle cover (Figure 8)
- \* Use the needle cover to unscrew the needle and put it in a proper container for used needles
- \* Place the white cap on the pen. Store your pen in the refrigerator



---

**Remove the needle and replace the white cap. Store the GoQuick in the refrigerator**

---

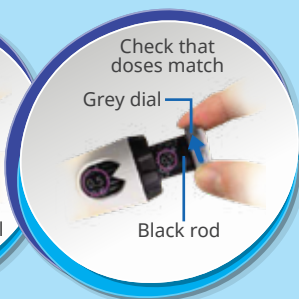
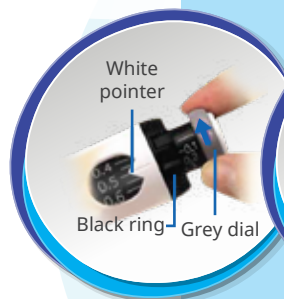
Now that you've set up the GoQuick, you just need to follow the 3 daily steps each day



# 3 easy steps for everyday use<sup>1</sup>



**Step 1. Attach the needle**

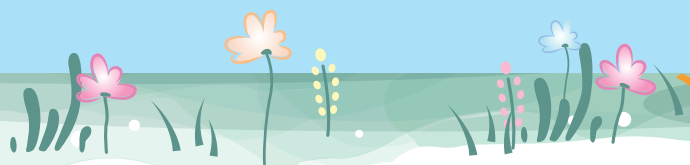


**Step 2. Dial up the dose**

Make sure the dose you dialled up on the BLACK rod is the same as the dose you set in the memory window



**Step 3. Give the injection hold for 5 seconds**



# Storing and caring for the GoQuick<sup>1</sup>



It is important to look after your pen and here is some useful information on how to make sure you get the most out of it.

## Storing your pen

- \* Never store your pen with the needle on
- \* Store your pen with a pen cap attached
- \* Store your pen in a refrigerator (2-8°C)
- \* Do not freeze your pen
- \* Once the growth hormone is mixed, your pen may be used up to 28 days
- \* Do not use your pen after 28 days, even if there is still medicine left in the pen
- \* Do not use your pen after its printed expiry date





## Caring for your pen<sup>1</sup>

- \* Do not reconstitute the growth hormone without a needle on the pen
- \* Protect your pen from light, dust, and dirt
- \* Do not drop your pen
- \* Clean your pen with a dry cloth. Do not put your pen in water
- \* Unused genotropin syringes and/or waste materials should be disposed off according to local requirements. Do not reuse the syringes or needles
- \* If your pen appears damaged, do not use it





Reference1. Genotropin LPD LPDSOMO52020. Local Product Document: Somatotropin for Injection. I.P. Genotropin GoQuick 5.3mg and 12mg,LPDSOMO52020

Issued in public interest by Pfizer. Your doctor is the best resource for medical advice and information. The health information contained herein is provided for educational / awareness purposes only and is not intended to replace discussions with a medical practitioner and/or medical advice. While due care and caution has been taken to ensure that the content of this page is free from mistakes or omissions, Pfizer makes no representations or warranties of any kind, expressed or implied, as to the accuracy, completeness or adequacy of the contents on this page and will not be liable for any damages, adverse events, and personal liability arising therefrom.



Pfizer Limited, The Capital, 1802, 18th Floor, Plot No. C - 70, 'G' Block, Bandra Kurla Complex, Bandra (E), Mumbai - 400 051

PP-GEN-IND-0334 07/6/2021